

AQUAMAT® MARINE FLOORING - TEAK TEMPLATE INSTRUCTIONS

- STEPS:**
1. Create Template
 2. Mark Template
 3. Cut & Check Template
 4. **Mark Teak Lines**
 5. Mail Template

You can use your own materials or one of our AquaMat® Template Kits. All you need is a pattern material, such as a durable craft paper, heavy plastic (min 6mil) or TyVek house wrap, that will not stretch when pulled tight or hold a crease, marking pen, straight edge, scissors and tape (painters tape works best).

AQUAMAT® MARINE FLOORING - TEAK TEMPLATE INSTRUCTIONS

TEAK EXAMPLES



TEAK INSTRUCTIONS

Mark one main center line through the entire set. The main line must be marked as "main line" Other pieces must have lines throughout as well, but we will orient off the main line.

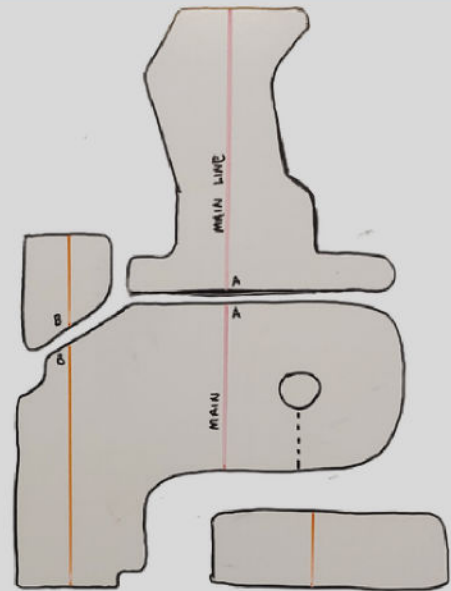
All lines **MUST** be parallel, this is how we square pieces together

If pieces meet, mark as "A" on one edge and another "A" on corresponding edge of second piece. "B" to "B", "C" to "C", etc.

Even if pieces don't connect, place a straight, parallel line running through it.

*Mark All Lines with a straight edge + visible marker for the best results.

If possible, transparent template material is best.



NOTE: \$150+ Fee to send in your existing flooring as it, and an additional 2 weeks for production. We do not guarantee an exact fit. Primarily because carpet can stretch and lose its shape over time, making it a poor choice as a pattern on it's own. Instead, use that existing flooring to create a pattern as outlined in Step 1, Option 1.

Send Completed Pattern to:
Corinthian Marine
Custom AquaMat Department
2000 SE Milport Road
Portland, OR 97222

Upon Receipt of your Template:

You will be contacted with the final price. Production of your AquaMat® marine flooring will begin immediately upon your approval and will normally be completed in 10 business days. We guarantee the AquaMat® will duplicate the template you provide. Every custom AquaMat® has a 5-year warranty.

Pattern Returns: Patterns are kept on file for 90 days. We will be happy to return patterns at your request, but finished mat must be received and approved, first. Customer is responsible for return shipping charges